



ELECTRIC CHARACTERISTICS

Model No.	B6PY06018L001	B6PY06018L002
Max. Power (Pmax)	60	60
Max. Power Voltage (Vmp)	18.1	18.1
Max. Power Current (Imp)	3.32	3.32
Open Circuit Voltage (Voc)	22.2	22.2
Short Circuit Current (Isc)	3.54	3.54

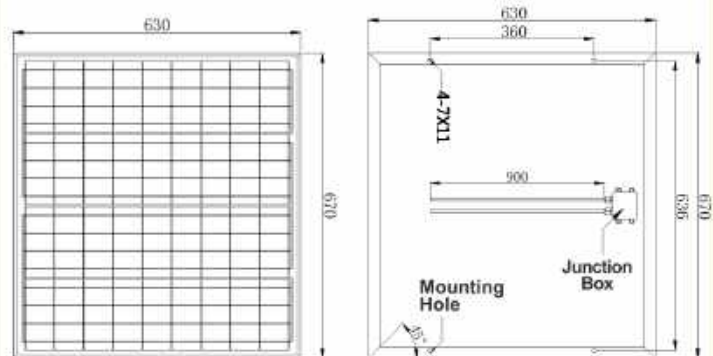
SPECIFICATION

Model No.	B6PY06018L001	B6PY06018L002
Cell Type	POLY	POLY
Dimension (mm)	630*670*30	820*510*30
Cable Length (mm)	900	900
Type of Connector	None/MC4	None/MC4
Weight (kg)	4.64	4.50

— B6PY06018L001 —

Front

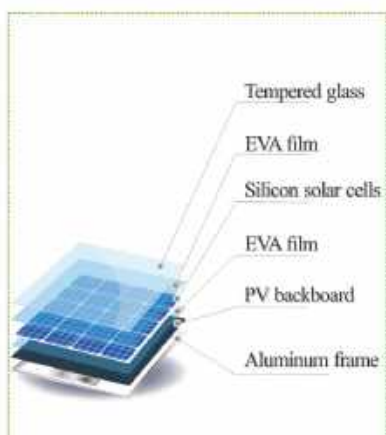
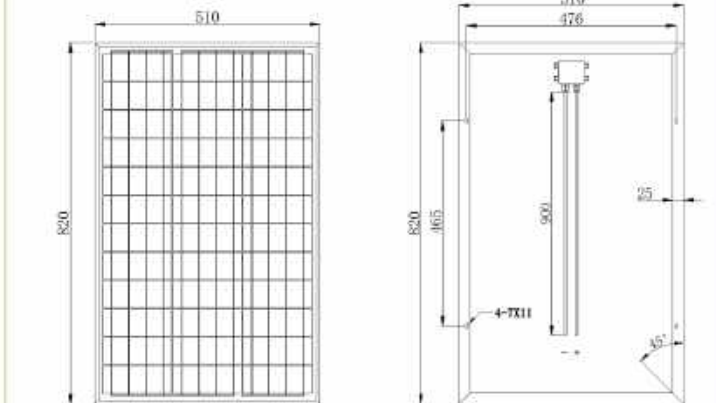
Back



— B6PY06018L002 —

Front

Back



- High energy conversion rate
- Customized design
- Green energy
- 25 years lifetime

